

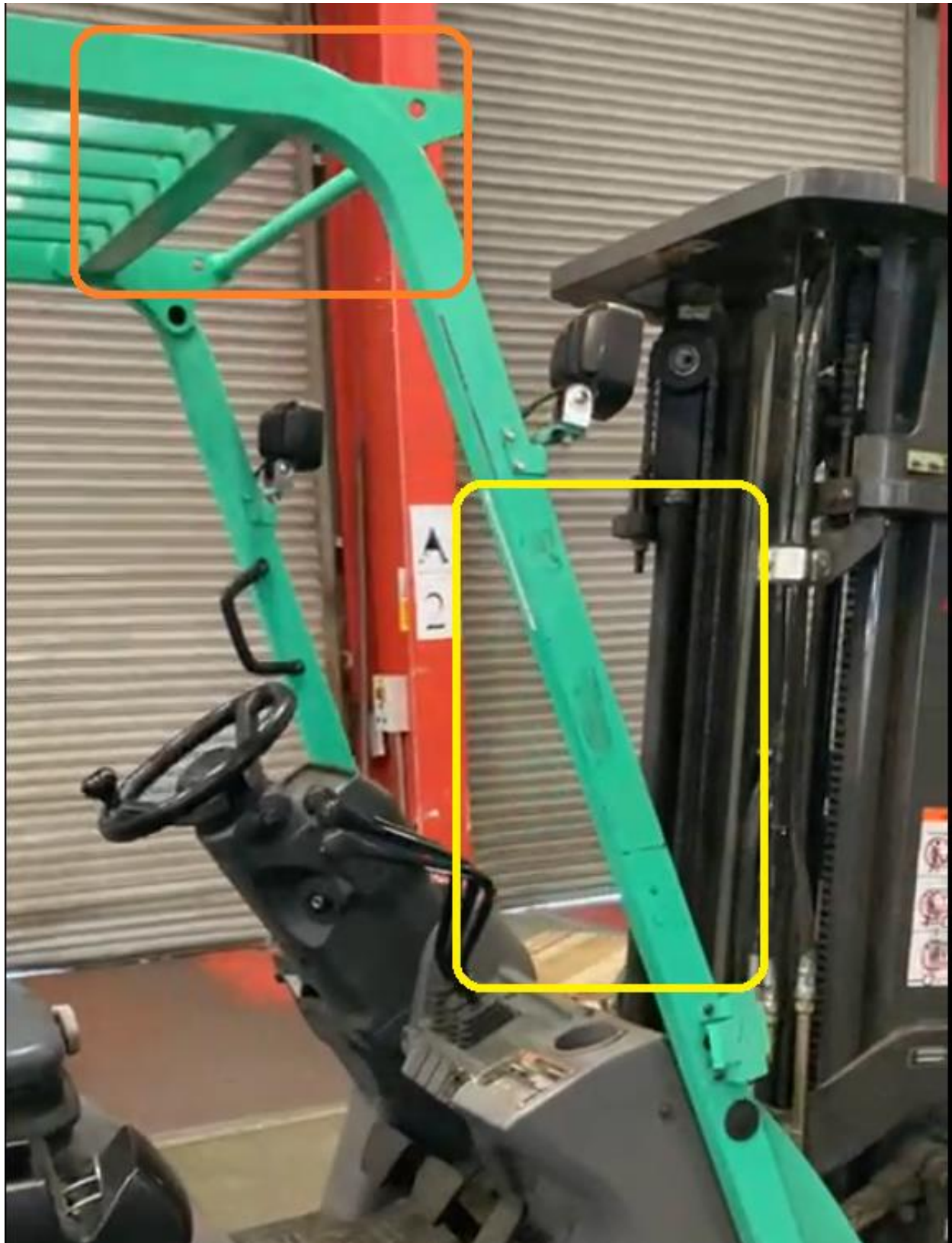
VM1A Mounting Suggestions for Uniserve

Disclaimer

The suggestions in this document are based on previous experience with installations of Honeywell vehicle mounted computers. However, each company, site and forklift type have different requirements. **Please confirm all suggestions within this document with the relevant forklift maintenance and site health & safety teams before proceeding with installation.**

Introduction

The following recommendations have been made based on viewing videos of the various forklift trucks onto which the Honeywell VM1A Vehicle Mounted Computer is to be mounted. No site visit was possible at the time of writing.



Option 1 (Yellow area)

VM1A could be mounted using Short Arm with Clamp Base around the green strut. It would need to be positioned carefully to avoid blocking driver view or interfering with control sticks beside steering wheel. Need to check width of strut is less than 2.5 inches.

VM1004BRKTKIT	RAM MOUNT KIT, FLAT CLAMP BASE, SHORT ARM, 5 inches (128mm), BALL FOR VEHICLE DOCK REAR
---------------	---



Alternative kits with same clamp base, but longer arms, are:

VM1005BRKTKIT	RAM MOUNT KIT, FLAT CLAMP BASE, MEDIUM ARM, 8.5 inches (215mm), BALL FOR VEHICLE DOCK REAR
VM1006BRKTKIT	RAM MOUNT KIT, FLAT CLAMP BASE, LONG ARM, 13 inches (330mm), BALL FOR VEHICLE DOCK REAR

Option 2 (Orange area)

It may also be possible to hang VM1A down from crossbars at top of cab, either circular or square ones at front. However this may block driver view or be too far to reach. Testing would be required with different arm lengths. Clamp Base kit similar to above work with the square crossbar, but circular crossbar would need a Pipe Clamp base with arm and ball for back of dock (we don't have kits with pipe clamp bases in).



VX89A033RAMBALL	BALL D-SIZE 2.25, CLAMP BASE FOR 1.25 TO 1.875 PIPE MOUNT
VX89A040RAMBALL	BALL D-SIZE 2.25, CLAMP BASE FOR 2 TO 2.5 PIPE MOUNT
VX89A502RAMARM	RAM SHORT ARM, 128mm (5 inches) FOR D-SIZE 2.25 BALLS
VM1001RAMBALL	THOR DOCK BALL, D-SIZE, WITH MOUNTING HARDWARE, for spare docks, included in RAM mount kits

Alternative arms to VX89A502RAMARM with longer lengths are:

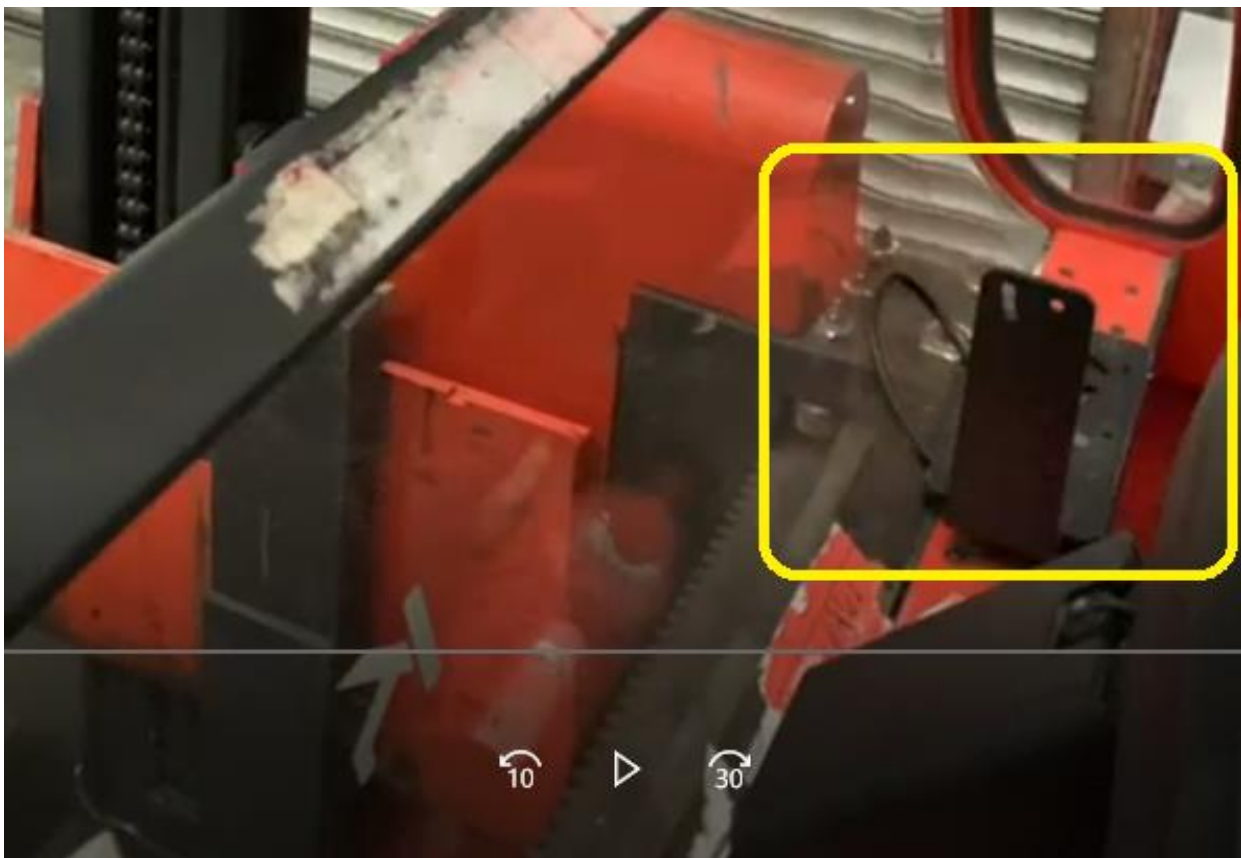
VX89A501RAMARM	RAM MEDIUM ARM, 215mm (8.5 inches) FOR D-SIZE 2.25 BALLS
VX89A503RAMARM	RAM LONG ARM, 330mm (13 inches) FOR D-SIZE 2.25 BALLS



Attach to the grey handrail using Short Arm and one of the Clamp (VM1004BRKTKIT) or Pipe mount bases as seen in the previous section. It's hard to see from the video the exact shape of the rail. Looks to me like an oval cross-section so you'd probably need to test all three to see which fits best.

On this forklift I'm not sure the bars at the top are suitable for a hanging mount. Those wide thin blades don't lend themselves to a clamp base. I don't believe you can drill into those either as they are a safety feature. Something to ask the forklift team if that is an option you wish to pursue.

VID-20210217-WA0002.mp4



There appears to be an existing mount and cabling in the place marked in yellow in the two pictures above. That seems like a natural mounting point, as the horizontal red panel below appears to have nothing underneath and there appears to be a precedent for drilling through it (or maybe in front of it? Hard to see exactly how that existing mounting bracket is attached).

Option 1 – Short Arm with Plate Base

Assuming the bracket marked in yellow can be removed, you could use a Short arm with a Plate Base to mount. The arm would be upright from the ball on the base plate to the ball back of the VM1A dock. I think using the plate base would be a sturdier solution than just attaching the round base directly to the horizontal red panel.

VM1007BRKTKIT	RAM MOUNT KIT, PLATE BASE, SHORT ARM, 5 inches (128mm), BALL FOR VEHICLE DOCK REAR
---------------	--



Alternative kits with same plate base, but longer arms, are:

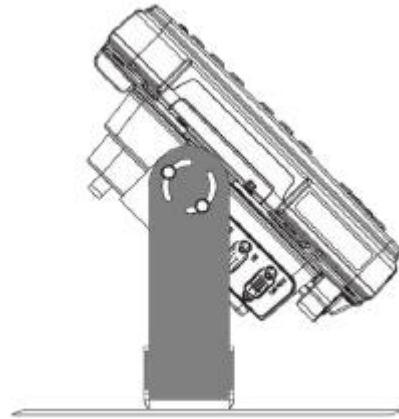
VM1008BRKTKIT	RAM MOUNT KIT, PLATE BASE, MEDIUM ARM, 8.5 inches (215mm), BALL FOR VEHICLE DOCK REAR
VM1009BRKTKIT	RAM MOUNT KIT, PLATE BASE, LONG ARM, 13 inches (330mm), BALL FOR VEHICLE DOCK REAR

Alternatively, if the bottom of the bracket is separate from the vertical piece, you could remove the vertical piece and mount the round base on the existing plate. The round base kit is the same as the plate base kit minus the plate i.e. the larger round base could be screwed into existing plate.

Option 2 – U-Bracket

Another alternative is the U-Bracket. This can reduce the amount of space required, though you trade off the flexibility of the ball joints when positioning. The U-Mount can only tilt the VM1A back and forward. It cannot be turned left and right.

VM1010BRKTKIT	Thor LXE U-Bracket mount kit, includes U-Bracket, Adapter Bracket and hardware
---------------	--





Please discuss with this Flexi as I cannot see any obvious mounting point, other than maybe hanging down from the safety cage which may not be permitted. I don't think that screwing a round or plate base onto the plastic body is likely to work either.

Flexi do have an "A4 Clipboard/RDT Mount" mentioned in their options but the picture is very small so I cannot see if that would apply to your model of Flexi FLT. If it does, and we can get more details of what it looks like, then maybe we can attach to that.

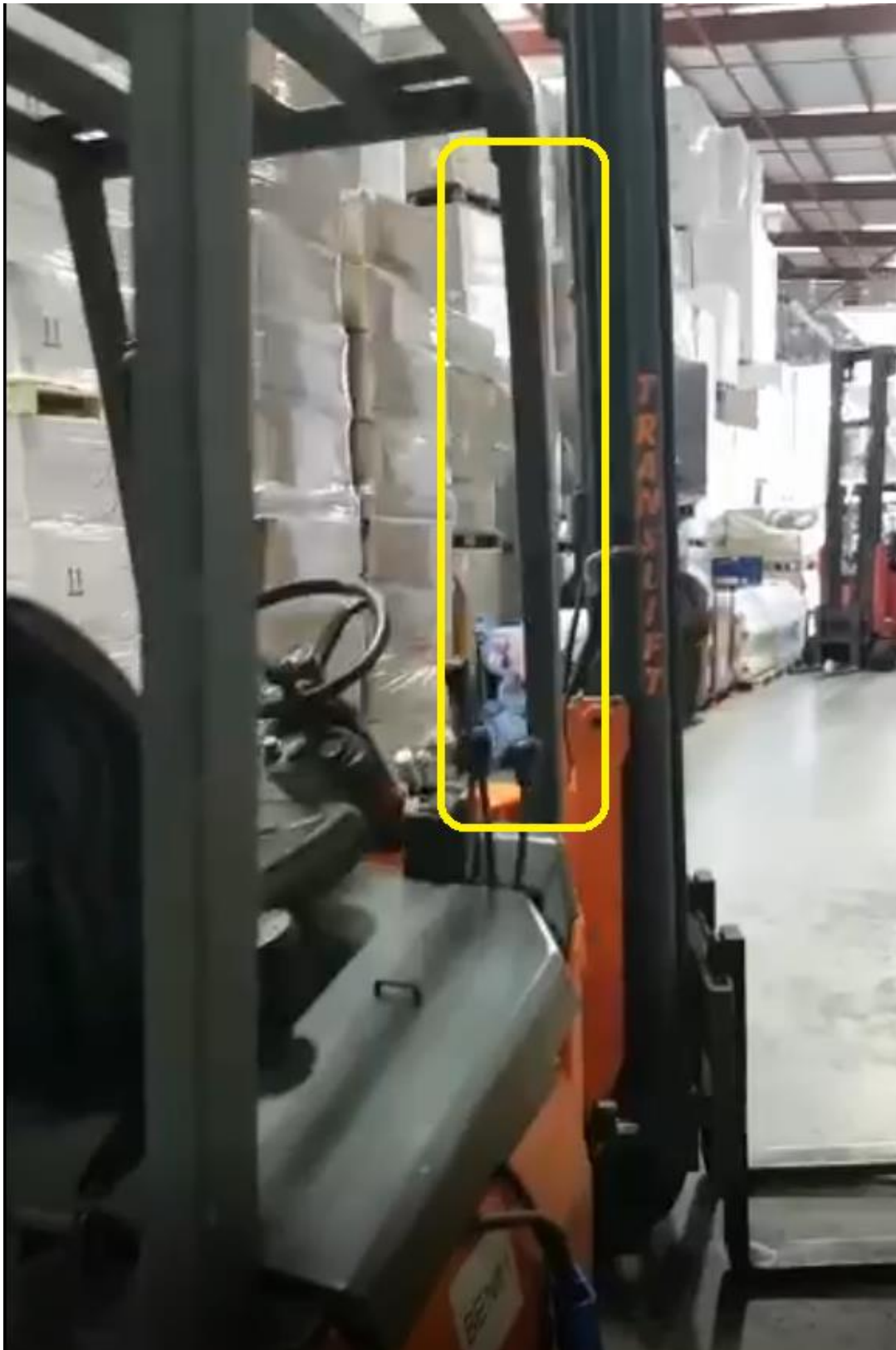
<https://www.flexi.co.uk/en/the-flexi-edge/flexi-optional-features/>



A4 Clipboard /RDT Mounting

A4 Clipboard/RDT Data Terminal. Mounted within operators reach.

VID-20210218-WA0001.mp4



Short Arm with Clamp Base attached to one of the grey cab posts seems like the best option here. The arm could be oriented vertically to minimum the distance it sticks out from the arm into the cab.

VM1004BRKTKIT	RAM MOUNT KIT, FLAT CLAMP BASE, SHORT ARM, 5 inches (128mm), BALL FOR VEHICLE DOCK REAR
---------------	---



Alternative kits with same clamp base, but longer arms, are:

VM1005BRKTKIT	RAM MOUNT KIT, FLAT CLAMP BASE, MEDIUM ARM, 8.5 inches (215mm), BALL FOR VEHICLE DOCK REAR
VM1006BRKTKIT	RAM MOUNT KIT, FLAT CLAMP BASE, LONG ARM, 13 inches (330mm), BALL FOR VEHICLE DOCK REAR

Again, if permitted, an alternative may be to use the same kit to hang the VM1A from the top bars of the safety cage.

New Jungheinrich FLTs

Disclaimer

The following suggestions are based on pictures of trucks in sales brochures and may therefore be less useful than suggestions based on videos of actual trucks in use. Honeywell advise that you consult with Jungheinrich regarding best mounting places and/or addition of additional mounting accessories.

EKX 516



Appears to have similar cab to truck in video **VID-20210217-WA0002.mp4** so similar options for mounting either side of steering wheel, behind clear plastic guard, could be used.

Jungheinrich documentation refers to "Bracket for installing terminals on the handrail, right" which I have assumed is somewhere in the area marked in yellow. It also mentions power connections to the "railing".

ETV 325, EVT 216



There appears to be a circular rail in the area shown, so a short or medium arm with one of the pipe mount bases could be used.

EFG 320



Not clear from these photos where the best place would be. I suggest you ask Jungheinrich for guidance. Maybe attach with pipe mount to handrail if they don't have a preferred mounting point, though health & safety concerns (e.g. blocking use of handrail) may prevent that?

EFG430



I could not find good photo of inside of cab. Please ask Jungheinrich for their advice on suitable mounting points.

History

19/02/2021	First release for comments
24/02/2021	Added alternative part numbers for medium and long mounting arms
25/02/2021	Added additional suggestions based on sales brochure photos of Jungheinrich FLTs